

Transpalock 900 & Winglock 900



Elegant pedestrian control

The Transpalock 900 and Winglock 900 range of automatic, waist-high glass turnstiles and gates offers a simple yet effective method of controlling staff and visitors without creating an obtrusive barrier. Constructed predominantly from glass and stainless steel, the units never look out of place. Both units incorporate all of the control and drive gear within the centre column for ease of installation and maintenance and can be operated via any access control system.

Transpalock 900

The Transpalock is a three-wing, semi or fully automatic glass turnstile within either a tubular stainless steel or glazed enclosure. The frameless toughened glass door wings are mounted on a central column. Transpalock turnstiles are bi-directional in operation but can only accommodate traffic in one direction at a time.

Winglock 900

The Winglock utilises the same control and drive gear as the Transpalock turnstile and can be programmed to open through 90° or 180°. Usually used in combination with one of the other Boon Edam barrier products, the Winglock is perfectly designed to provide controlled passage for people in wheelchairs or deliveries of bulky items.

Working principle

Transpalock 900

The Transpalock 900 has the option of fully automatic or push-and-go operation. In either case the turnstile is always locked in the rest position. Once authorisation is received from an access control system or external control panel, the Transpalock will either; automatically rotate 120 degrees in the desired direction for each user, or allow users to push-start the drive system. In both cases the Transpalock will re-lock once the desired rotation cycles have been completed.

Winglock 900

The Winglock 900 is always locked in the rest position, but will open in the desired direction when authorisation is granted via an access control system or external control panel. Once authorisation is given, the gate opens 90° in the desired direction before closing and relocking.

Both the Transpalock 900 & Winglock 900 allow authorised traffic in both directions and a number of authorisation signals can be stored by the built-in control system so that the door will 'remember' to turn in the correct direction for each user.



Safety features

At Boon Edam we put safety first. User safety is an important issue when you are securing your entrance, as well as the possibility to keep your entrance available as an emergency exit.

Emergency

Fail-safe operation ensures the lock and motor will disengage in the event of a power failure to allow free passage. Alternatively, if back-up power is available, the Winglock 900 can be programmed to open in the escape direction upon receipt of a fire alarm signal.

Elegant design

Both the Transpalock and Winglock are built to high standards using high quality materials, creating stylish, transparent and sophisticated designs.

Finishing

The Transpalock frame can either be constructed using 40mm or 48mm tubular stainless steel or an 8mm curved toughened glass enclosure. The standard metalwork is constructed from grade 304 and grain 320 with 10mm thick toughened glass used for all door wings.

Construction

The motor and locking mechanisms are housed within the 168mm centre column, which can be surface mounted onto any solid floor to allow ease of installation and maintenance. All door wings are insert mounted into the drive column.

Options

- External control panel
- A fixing for a card reader on the tube frame
- External console for mounting the card reader
- Door wing fixation with visible glass clamps

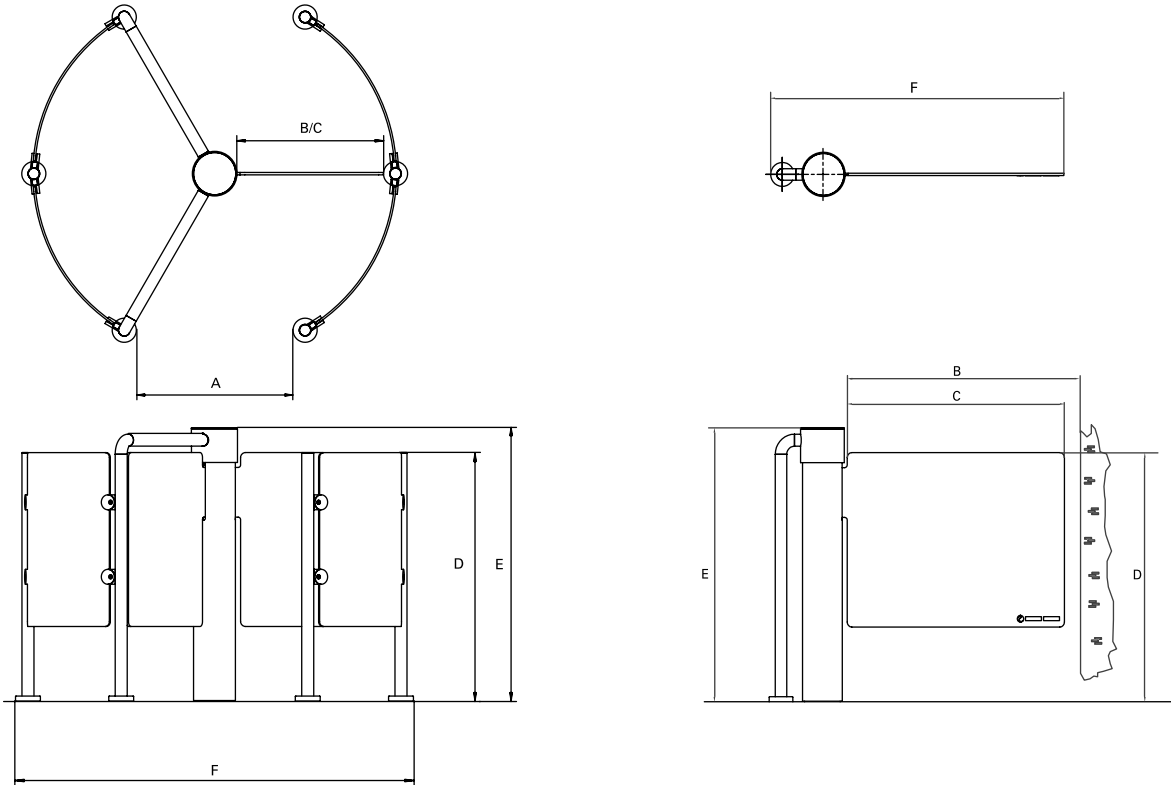
All software reprogramming is carried out using an external PDA, allowing fault finding and functionality adjustments to be made without the need for disassembly.



Standard dimensions and traffic flow

(mm)	Door wings	A Throat opening	B Passage width	C Door wing width	D Door wing height	E Overall height	F Overall width	Capacity / minute *
Transpalock 900	3	710	616	616	1000	1100	1600	15
Winglock 900	1	N/A	approx 990	920	1000	1100	1250	30

* Maximum capacity per minute indicates how many people can pass through in either direction



Technical specifications

Power supply	200-240 VAC, 50/60 Hz
Power consumption:	
Operating	65 W
Stationary	20 W
Ambient temperature	-20°C to +50°C
Weight	Transpalock 900: 118kg Winglock 900: 60kg
Compatibility	The Transpalock and Winglock are compatible to most access control systems by using potential free contacts.

High quality

At Boon Edam, we take quality seriously. Quality of the materials we use, quality of our employees as well as quality of our partners. As with all Boon Edam products, the Transpalock 900 and Winglock 900 are manufactured to the highest standards, are CE approved and comply with the Machine Directive (98/37/EEC), the EMC-Directive (89/336/EEC) and the Low Voltage Directive (93/68/EEC).

Distributor

Boon Edam B.V.
P.O. Box 40, 1135 ZG Edam
The Netherlands
T +31 (0)299 38 08 08
F +31 (0)299 37 28 59

E sales@boonedam.nl
I www.boonedam.com